

Fuji Electric PXR Temperature controller, configuration tool and cable.

The PXR4-Conf- 232 will help you to

- Store controller settings to your PC
- Quickly download multiple parameter settings
- Fast configuration of many controllers
- USB 2.0 to Serial Converter
- Connects directly to PXR motherboard
- Provides direct access to the processor
- No need for RS485 option
- Suitable for current and legacy controllers

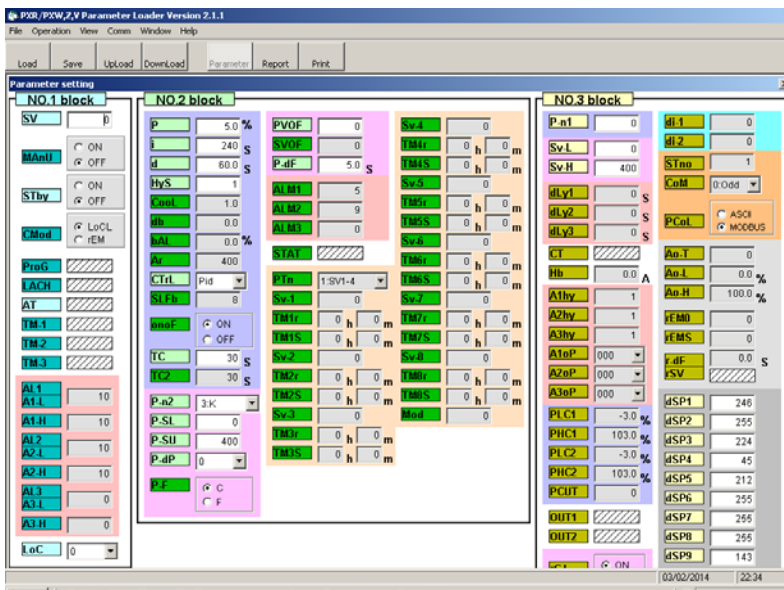


The PXR range of “entry level” temperature controllers have additional flexibility that can be accessed using its settings.

There are more than 100 settings that can be changed using the 3 buttons on the front panel. It is however much easier to understand these settings and adjust them using the configuration tool and cable, from the comfort of your PC.

The clip, cable and software is compatible with Windows XP, and Windows7 using standard USB connection to create a serial COM port.

The standard clip is designed for use with 1/64 DIN (48mmx48mm) and 1/8 DIN (48x96mm) Fuji Electric Controllers



PXR4, PXR5, PXV4, PXV5, PXZ4, PXZ5, PXW4, PXW5.

An alternative clip is also available to suit 72x72mm and 96x96mm PXR9, PXR7, PXV7, PXV9, PXW7, PXW9, PXZ7 and PXZ9.

The PXR4-Conf- 232 programming cable and software is particularly useful where the ramp soak (temperature profile) feature of the controller is being used. Although it is equally useful for teaching and setting multiple variants of the controller

Rear View of Fuji Electric PXR4 Temperature controller and location of the configuration tool.



How to Order : Code PXR4-Conf- 232

This product is unique to Coulton Instrumentation Ltd, who were recently voted Fuji Electric’s most successful distributor for panel instrumentation.