

# Free Choice by Size and Resolution

	Resolution ▶	1024×768 XGA	800×600 SVGA	640×480 VGA	640×480 VGA	320×240 QVGA
15.0type		UG30 Series UG630H-XH ▶ P.6	UG30 Series	UG30 Series	Handy POD	UG30 Series Simple POD UG221 Series
12.1type			UG530H-VH UG530H-VS ▶ P.6			
10.4type			UG430H-VH UG430H-VS ▶ P.6	UG430H-TH UG430H-TS UG430H-SS ▶ P.6-7		
8.4type			UG330H-VH UG330H-VS ▶ P.7			
7.7type				UG330H-SS ▶ P.7		
5.7type				UG320HD-SC4 UG320HD-SC4K ▶ P.9 UG320HD-SC43 UG320HD-SC4K3		
						UG230H-TS UG230H-SS UG230H-LS ▶ P.8
						UG221H-SR UG221H-LR UG221H-LE ▶ P.8
						UG221H-TC UG221H-SC UG221H-LC ▶ P.9

### Separated type POD (monitor separated type)

**Monitor separated type POD to UG30 series newly available**  
Commercially available monitors can be connected to the monitor separated type POD.

**Big-sized monitor display**

Realizes big-sized monitor by connecting to a big-sized PDP(plasma display panel) or LCD monitor. Effective for Andon monitor at production lines, waiting list monitor at hospitals, and many more applications.

**PLC 2-way function**

Two PLCs from different manufacturers or series can be connected to the monitor separated type POD. The monitor separated type POD acts as the gateway among PLCs from different manufacturers.

**Touch panel interface**

When connected with a touch panel function monitor, functions equivalent to POD with big-sized monitor can be obtained.

**Functions equivalent to UG30 series**

Functions equivalent to UG30 with monitor can be realized based on UG430H-VH□. Since screen data created for 800x600 dots POD can be used, big-sized monitor can be achieved easily.

**System**

UG430H-VH□B+UG30A-ROS ▶ P.7

## Meeting a variety of needs with a wide range of products

### POD UG30 Series



15.0 type

XGA

#### UG630H-XH

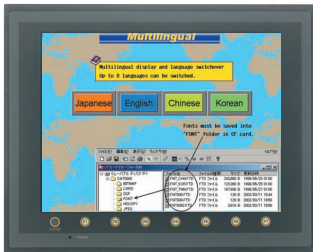
▶ P.26

15.0-inch TFT color LCD  
 Display color: 32,768 colors  
 Resolution: 1024 x 768 dots (XGA)

##### External interface



##### Main functions



12.1 type

SVGA

#### UG530H-VS

▶ P.28

12.1-inch TFT color LCD  
 Display color: 32,768 colors  
 Resolution: 800 x 600 dots (SVGA)

##### External interface



##### Main functions



10.4 type

SVGA

#### UG430H-VS

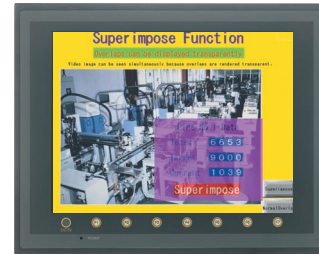
▶ P.28

10.4-inch TFT color LCD  
 Display color: 32,768 colors  
 Resolution: 800 x 600 dots (SVGA)

##### External interface



##### Main functions



12.1 type

SVGA

#### UG530H-VH

▶ P.28

12.1-inch TFT color LCD  
 Display color: 32,768 colors  
 Resolution: 800 x 600 dots (SVGA)

##### External interface



##### Main functions



10.4 type

SVGA

#### UG430H-VH

▶ P.28

10.4-inch TFT color LCD  
 Display color: 32,768 colors  
 Resolution: 800 x 600 dots (SVGA)

##### External interface



##### Main functions



10.4 type

VGA

#### UG430H-TH

▶ P.28

10.4-inch TFT color LCD  
 Display color: 32,768 colors  
 Resolution: 640 x 480 dots (VGA)

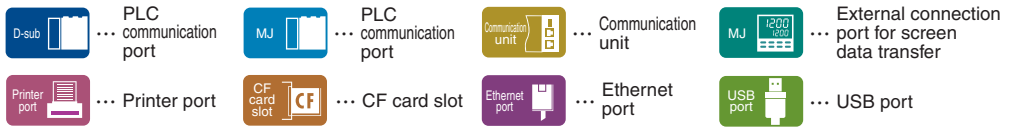
##### External interface



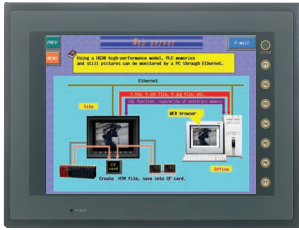
##### Main functions



**External interface icon:**



## 32,768 Full-color Display for Enhanced Clear and Sharp Image Display



10.4<sup>type</sup>  
VGA

### UG430H-TS

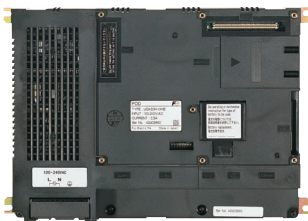
▶ P.28

10.4-inch TFT color LCD  
Display color: 32,768 colors  
Resolution: 640 x 480 dots (VGA)

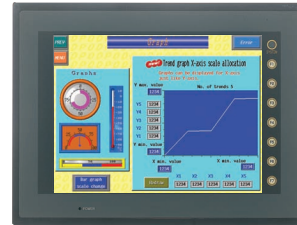
**External interface**



**Main functions**



SVGA



10.4<sup>type</sup>  
VGA

### UG430H-SS

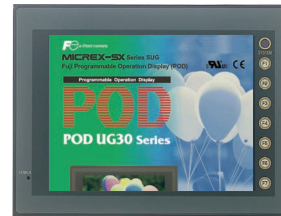
▶ P.28

10.4-inch TFT color LCD  
Display color: 128 colors  
Resolution: 640 x 480 dots (VGA)

**External interface**



**Main functions**



8.4<sup>type</sup>  
SVGA

### UG430H-VH

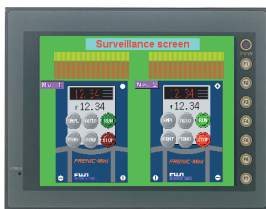
▶ P.29

Display color: 32,768 colors  
Resolution: 800 x 600 dots (SVGA)

**External interface**



**Main functions**



8.4<sup>type</sup>  
SVGA

### UG330H-VH

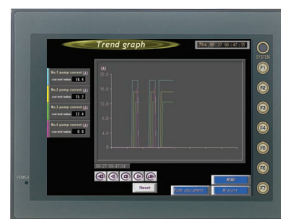
▶ P.28

8.4-inch TFT color LCD  
Display color: 32,768 colors  
Resolution: 800 x 600 dots (SVGA)

**External interface**



**Main functions**



7.7<sup>type</sup>  
VGA

### UG330H-VS

▶ P.28

8.4-inch TFT color LCD  
Display color: 32,768 colors  
Resolution: 800 x 600 dots (SVGA)

**External interface**



**Main functions**



### UG330H-SS

▶ P.28

7.7-inch STN color LCD  
Display color: 128 colors  
Resolution: 640 x 480 dots (VGA)

**External interface**



**Main functions**



## Meeting a variety of needs with a wide range of products

### POD UG30 Series



5.7type  
QVGA

#### UG230H-TS

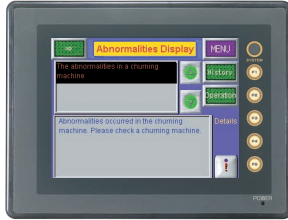
P.30

5.7-inch TFT color LCD  
Display color: 32,768 colors  
Resolution: 320 x 240 dots (QVGA)

##### External interface



##### Main functions



5.7type  
QVGA

#### UG230H-SS

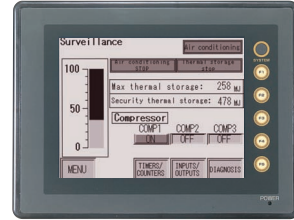
P.30

5.7-inch STN color LCD  
Display color: 32,768 colors  
Resolution: 320 x 240 dots (QVGA)

##### External interface



##### Main functions



5.7type  
QVGA

#### UG230H-LS

P.30

5.7-inch white mode monochrome LCD  
Display color: 2 colors (8 gradations)  
Resolution: 320 x 240 dots (QVGA)

##### External interface



##### Main functions



## Simple POD

Super flat type with only 38mm depth



5.7type  
QVGA

#### UG221H-SR

P.32

5.7-inch STN color LCD  
Display color: 16 colors  
Resolution: 320 x 240 dots (QVGA)

##### External interface



##### Main functions



5.7type  
QVGA

#### UG221H-LR

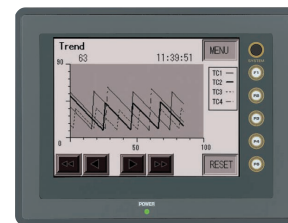
P.32

5.7-inch white mode monochrome LCD  
Display color: 2 colors (8 gradations)  
Resolution: 320 x 240 dots (QVGA)

##### External interface



##### Main functions



5.7type  
QVGA

#### UG221H-LE

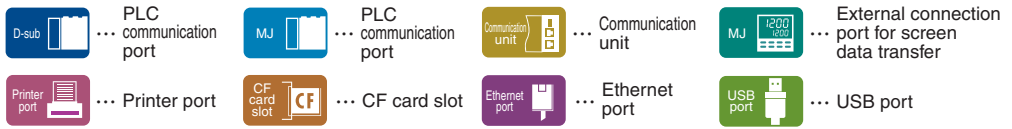
P.32

5.7-inch white mode monochrome LCD  
Display color: 2 colors (8 gradations)  
Resolution: 320 x 240 dots (QVGA)

##### External interface



**External interface icon:**



# POD UG221 Series

## Compact and complete networking



5.7 type  
QVGA



5.7 type  
QVGA



5.7 type  
QVGA

### UG221H-TC

▶ P.34

5.7-inch TFT color LCD  
Display color: 16 colors  
Resolution: 320 x 240 dots (QVGA)



### UG221H-SC

▶ P.34

5.7-inch STN color LCD  
Display color: 16 colors  
Resolution: 320 x 240 dots (QVGA)



### UG221H-LC

▶ P.34

5.7-inch blue mode monochrome LCD  
Display color: 2 colors (8 gradations)  
Resolution: 320 x 240 dots (QVGA)



## Handy POD



**Free choice of desktop or mobile with Handy POD**



7.7 type  
VGA

### UG320HD

▶ P.36

#### Comfortable 7.7 type with 128-color STN LCD

The 7.7-inch VGA (640 x 480 dots) with 128-color STN LCD enables a spacious screen layout that greatly enhances productivity.

#### A host of security, safety functions

##### Deadman's switch

The deadman's switch at the top of the display helps to prevent operating errors by requiring confirmation. (Two models available: 2-position and 3-position configurations) A deadman's switch lamp enhances safety.

##### Emergency stop switch

This standard-equipment, hardware-based switch lets you stop the system in case of emergency.

##### Key switch

The key-switch model increases security by allowing operation only by person with the key.

#### Analog touch panel

An analog resistance film touch panel simplifies on-screen arrangement of small parts, and also supports Memo Pad function.

#### Compact Flash (CF) card

The CF card interface is the standard equipment. Accumulation and storage of data that previously required a recorder can be done with the UG320HD only.

#### Convenient cable routing

The cable can be routed to the right or left, to hold it with either your right or left hand. This arrangement makes operation smooth and easy.

#### Other functions

- Degree of protection conforming to IP65
- Connectable with PLCs from different manufacturers (except for the use of the communication unit)
- Fixed 4 switches with enabling direct output
- Built-in clock function

POD Lineup  
POD models  
Product Feature [Image Expression]  
Product Feature [Network]  
Product Feature [Information Management]  
Product Feature [External Connection Unit]  
Product Feature [Maintenance Tool]  
Product Feature [Editor]  
Specification List  
Outline Dimensions  
System Configuration  
Peripheral Option List  
Connection Unit List  
Product Warranty  
Types and Specifications