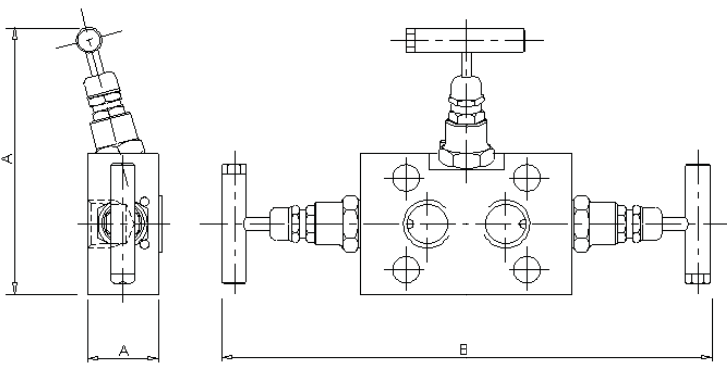


**Product Data Sheet** | **Y34/YV34 Type 3 Valve Manifold**



The 'Y34' and 'YV34' Type 3 valve manifolds are designed for direct mounting to differential pressure transmitters, with separate isolation for LP and HP inlets plus equalising valve for simple calibration. Each needle valve head is designed for safe and reliable isolation, giving bubble tight shut off, with non-rotating & anti-galling tip and dynamic self-adjusting spindle seal to give long service life in a variety of service conditions.

Part No.	Connections Size	A	B	C	Weight (Kgs)
Y34	1/2" F x FLANGE	4.7	8.6	1.2	1.5
YV34	1/2" F x FLANGE WITH VENT	4.7	9.1	1.2	1.5

**Key Features of the Oliver Needle Valve range**

- Non rotating tip - self centering & anti-galling
- Piston ring - gives dynamic adjustment of gland seal in response to pressure change
- Anti-blow out spindle - a major safety feature
- Secure seal - precision machined to give leak free operation for the life of the valve. Available in either PTFE or Grafoil

**Standard Specification**

Pressure: 6000psi	Packing: PTFE	Handle: T-Bar	Bore: 0.21" (5.4mm)
Temp: 240 deg C	Thread form: NPT	Seat: Metal to metal	CV: 0.46
4 x 7/16" UNF bolts for mounting to transmitter	2 x PTFE/Grafoil seal rings for transmitter flange		
1/2" Inlet Connections	1/4" NPT Plugged Vent Connection (YV34 only)		

**Ordering Code**

(Typical example) → **Y34** **S** / **BT** / **AT**

**Type**  
 Y34 - Female x Flanged  
 YV34 - Female x Flanged with vent

**Material**  
 S - 316S31 Stainless Steel      HC - Hastalloy (C276)  
 M - Monel (400)                      (Others available)

**Optional Connections (NPT Standard)**  
 BT - BSP Taper

**Options**

AG - Grafoil	LT200 - Cryogenic Head Unit (-200°C)
AT - Anti-Tamper	MT - Metering Tip
BKTC - Carbon steel mounting bracket	MTG - Tapped Mounting Holes x 2
BKTS - Stainless steel mounting bracket	NA - NACE MR-01-75 (latest revision)
HL - Handle Locking	OXY - Oxygen Cleaned
HL-PI - Handle Locking + Position Indicator	PK - PEEK Soft Tip
HW - Hand Wheel	SSB - Stainless steel transmitter mounting bolts (4800 psi max pressure rating)
LT100 - Cryogenic Head Unit (-100°C)	